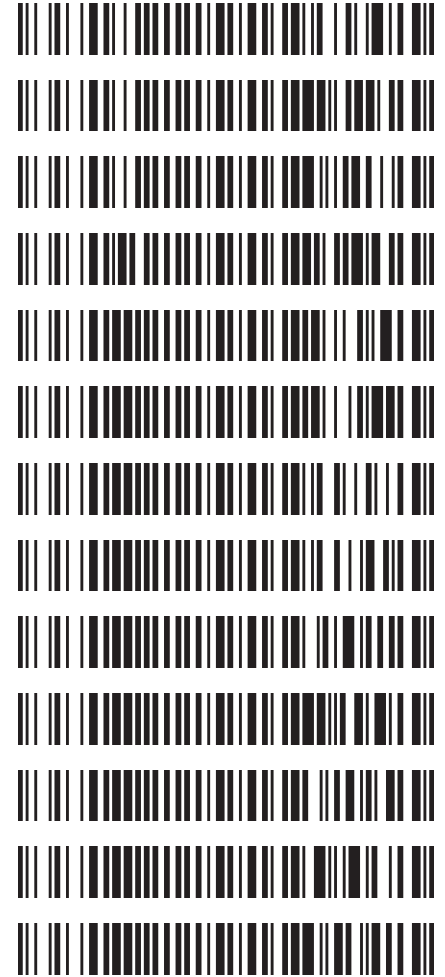


Worklist: 2896

<u>LAB_CASE</u>	<u>ITEM</u>	<u>TASK_ID</u>	<u>DESCRIPTION</u>
C2018-2544	2	137886	AM 3 Urine Carboxy-THC
C2018-2592	2	137887	AM 3 Urine Carboxy-THC
C2019-0022	3	137888	AM 3 Urine Carboxy-THC
M2018-6222	3	137889	AM 3 Urine Carboxy-THC
P2018-3525	1	137890	AM 3 Urine Carboxy-THC
P2018-3526	1	137891	AM 3 Urine Carboxy-THC
P2018-3585	1	137892	AM 3 Urine Carboxy-THC
P2018-3586	1	137893	AM 3 Urine Carboxy-THC
P2018-3596	1	137894	AM 3 Urine Carboxy-THC
P2019-0050	1	137895	AM 3 Urine Carboxy-THC
P2019-0062	1	137896	AM 3 Urine Carboxy-THC
P2019-0097	1	137897	AM 3 Urine Carboxy-THC
P2019-0156	1	137898	AM 3 Urine Carboxy-THC



Data Path : G:\TOX\Pocatello\MMS\CDS\2019\am 3 worklist 2896\  
Data File : THC-PC1.D  
Acq On : 24 Jan 2019 08:01  
Operator : ISP\datastor  
Sample : Spiked Positive c-THC Control  
Misc : c-THC lot # 0497429 in Negative Lot # POC062718; Worklist 2896  
ALS Vial : 2 Sample Multiplier: 1

Integration Parameters: events.e  
Integrator: ChemStation

Method : C:\gcms\1\methods\TOX.M  
Title :

Signal : EIC Ion 371.00 (370.70 to 371.70): THC-PC1.D\data.ms

peak #	R.T. min	first scan	max scan	last scan	PK TY	peak height	corr. area	corr. % max.	% of total
1	6.593	334	350	374	VV	1430	28212	100.00%	100.000%

Sum of corrected areas: 28212

Signal : EIC Ion 473.00 (472.70 to 473.70): THC-PC1.D\data.ms

peak #	R.T. min	first scan	max scan	last scan	PK TY	peak height	corr. area	corr. % max.	% of total
1	6.594	334	351	384	BB	594	11757	100.00%	100.000%

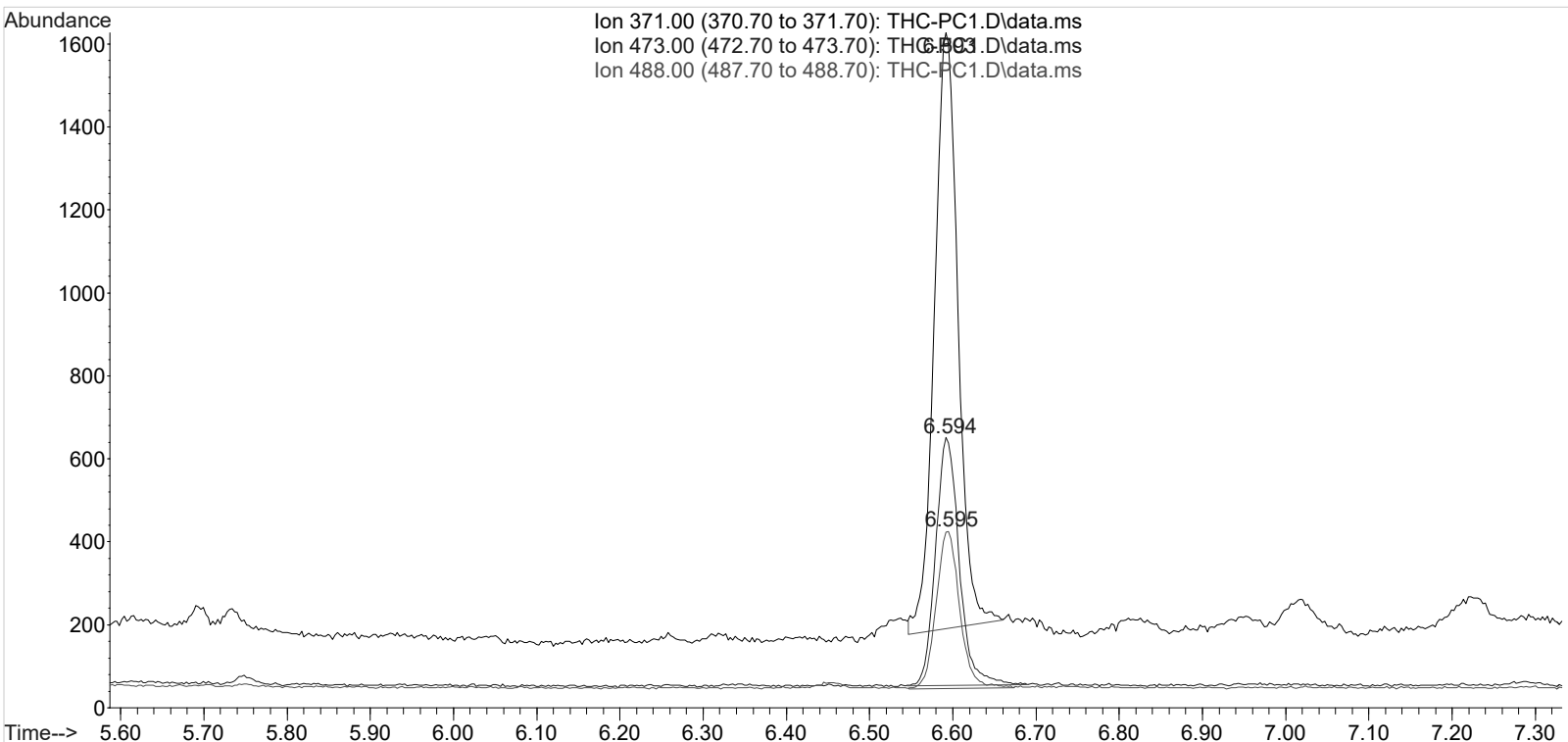
Sum of corrected areas: 11757

Signal : EIC Ion 488.00 (487.70 to 488.70): THC-PC1.D\data.ms

peak #	R.T. min	first scan	max scan	last scan	PK TY	peak height	corr. area	corr. % max.	% of total
1	6.595	334	351	379	BB	377	7355	100.00%	100.000%

Sum of corrected areas: 7355

TOX.M Fri Jan 25 08:33:05 2019



Data Path : G:\TOX\Pocatello\MMS\CDS\2019\am 3 worklist 2896\  
Data File : THC-PC2.D  
Acq On : 24 Jan 2019 14:47  
Operator : ISP\datastor  
Sample : Spiked Positive c-THC Control  
Misc : c-THC lot # 0497429 in Negative Lot # POC062718; Worklist 2896  
ALS Vial : 2 Sample Multiplier: 1

Integration Parameters: events.e  
Integrator: ChemStation

Method : C:\gcms\1\methods\TOX.M  
Title :

Signal : EIC Ion 371.00 (370.70 to 371.70): THC-PC2.D\data.ms

peak #	R.T. min	first scan	max scan	last scan	PK TY	peak height	corr. area	corr. % max.	% of total
1	6.693	324	385	401	BV	1725	31762	100.00%	100.000%

Sum of corrected areas: 31762

Signal : EIC Ion 473.00 (472.70 to 473.70): THC-PC2.D\data.ms

peak #	R.T. min	first scan	max scan	last scan	PK TY	peak height	corr. area	corr. % max.	% of total
1	6.694	364	385	421	BB	713	13944	100.00%	100.000%

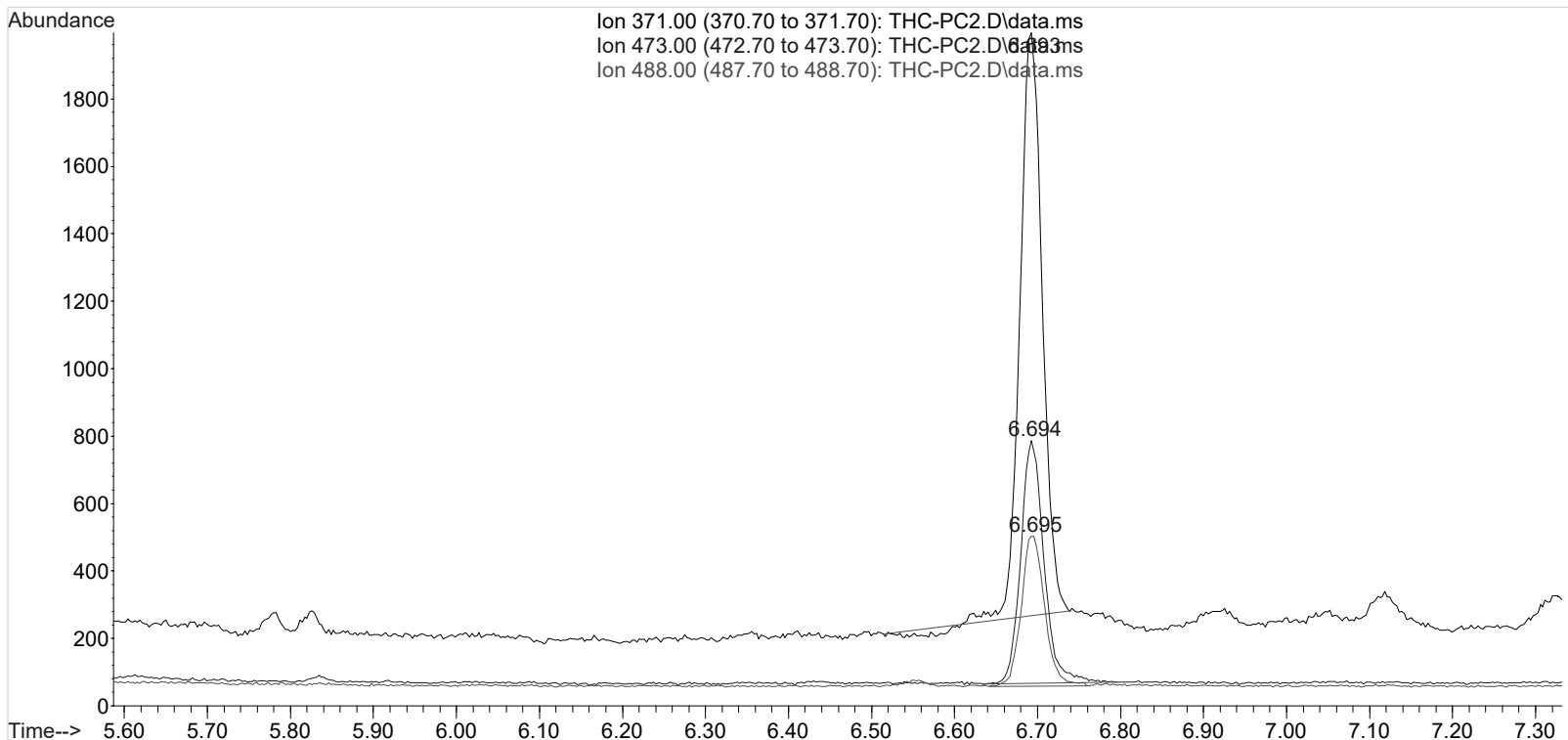
Sum of corrected areas: 13944

Signal : EIC Ion 488.00 (487.70 to 488.70): THC-PC2.D\data.ms

peak #	R.T. min	first scan	max scan	last scan	PK TY	peak height	corr. area	corr. % max.	% of total
1	6.695	368	386	409	BV	445	8743	100.00%	100.000%

Sum of corrected areas: 8743

TOX.M Thu Jan 24 15:25:56 2019



Data Path : G:\TOX\Pocatello\MMS\CDS\2019\am 3 worklist 2896\  
Data File : THC-NC.D  
Acq On : 24 Jan 2019 07:50  
Operator : ISP\datastor  
Sample : Negative Control  
Misc : Lot # POC062718; AM #3 Worklist 2896  
ALS Vial : 1 Sample Multiplier: 1

Integration Parameters: events.e  
Integrator: ChemStation

Method : C:\gcms\1\methods\TOX.M  
Title :

Signal : EIC Ion 371.00 (370.70 to 371.70): THC-NC.D\data.ms

peak #	R.T. min	first scan	max scan	last scan	PK TY	peak height	corr. area	corr. % max.	% of total
--------	----------	------------	----------	-----------	-------	-------------	------------	--------------	------------

No peaks were detected using the method integration parameters!  
Signal : EIC Ion 473.00 (472.70 to 473.70): THC-NC.D\data.ms

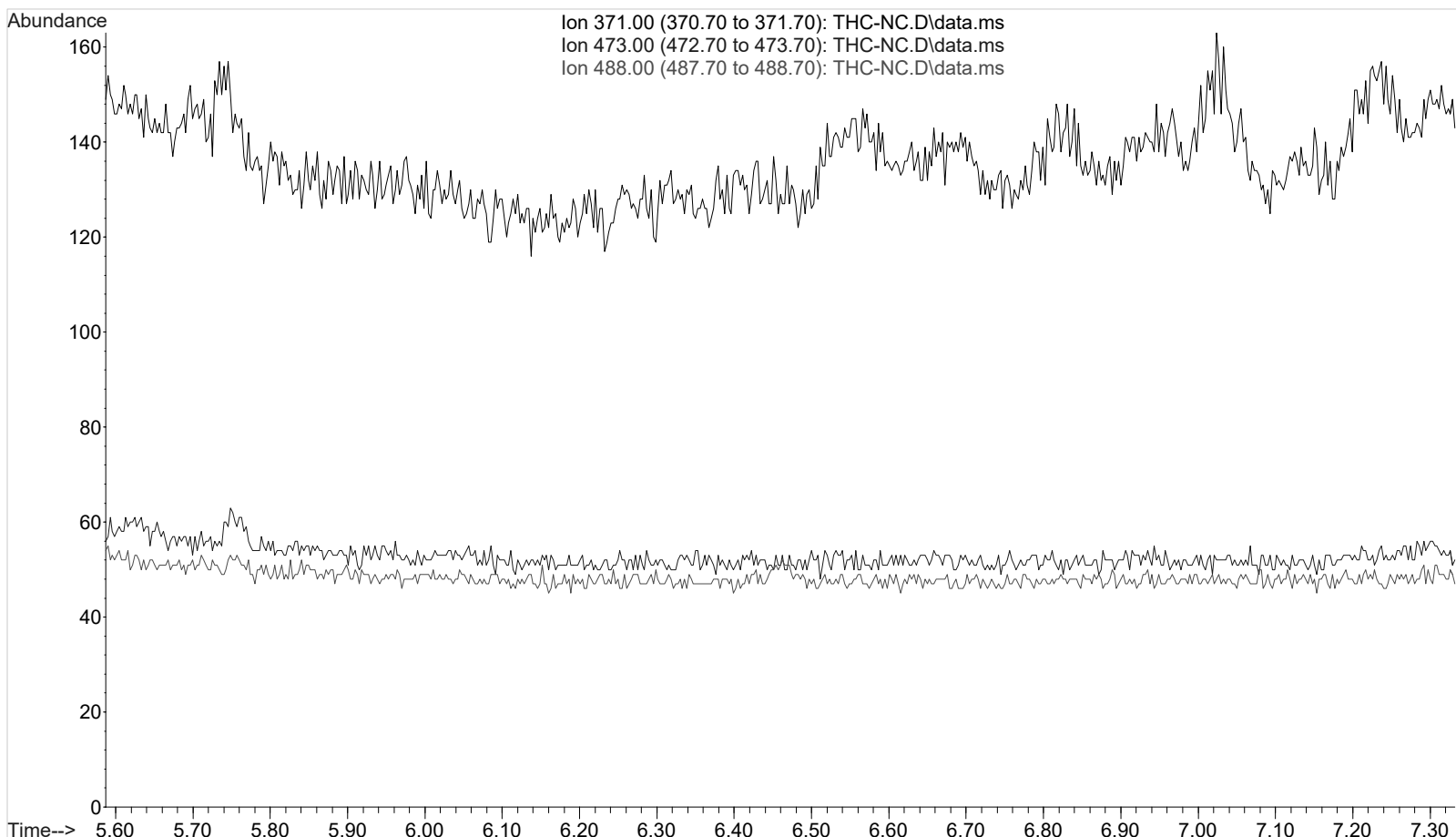
peak #	R.T. min	first scan	max scan	last scan	PK TY	peak height	corr. area	corr. % max.	% of total
--------	----------	------------	----------	-----------	-------	-------------	------------	--------------	------------

No peaks were detected using the method integration parameters!  
Signal : EIC Ion 488.00 (487.70 to 488.70): THC-NC.D\data.ms

peak #	R.T. min	first scan	max scan	last scan	PK TY	peak height	corr. area	corr. % max.	% of total
--------	----------	------------	----------	-----------	-------	-------------	------------	--------------	------------

No peaks were detected using the method integration parameters!

TOX.M Thu Jan 24 11:39:05 2019



Data Path : G:\TOX\Pocatello\MMS\CDS\2019\am 3 worklist 2896\  
Data File : THC-C3.D  
Acq On : 24 Jan 2019 08:23  
Operator : ISP\datastor  
Sample : Biorad C3 Control  
Misc : C3 Lot # 68440; Worklist 2896  
ALS Vial : 3 Sample Multiplier: 1

Integration Parameters: events.e  
Integrator: ChemStation

Method : C:\gcms\1\methods\TOX.M  
Title :

Signal : EIC Ion 371.00 (370.70 to 371.70): THC-C3.D\data.ms

peak #	R.T. min	first scan	max scan	last scan	PK TY	peak height	corr. area	corr. % max.	% of total
1	6.590	333	349	369	VV	395	7647	100.00%	100.000%

Sum of corrected areas: 7647

Signal : EIC Ion 473.00 (472.70 to 473.70): THC-C3.D\data.ms

peak #	R.T. min	first scan	max scan	last scan	PK TY	peak height	corr. area	corr. % max.	% of total
1	6.591	330	350	370	BB	158	3088	100.00%	100.000%

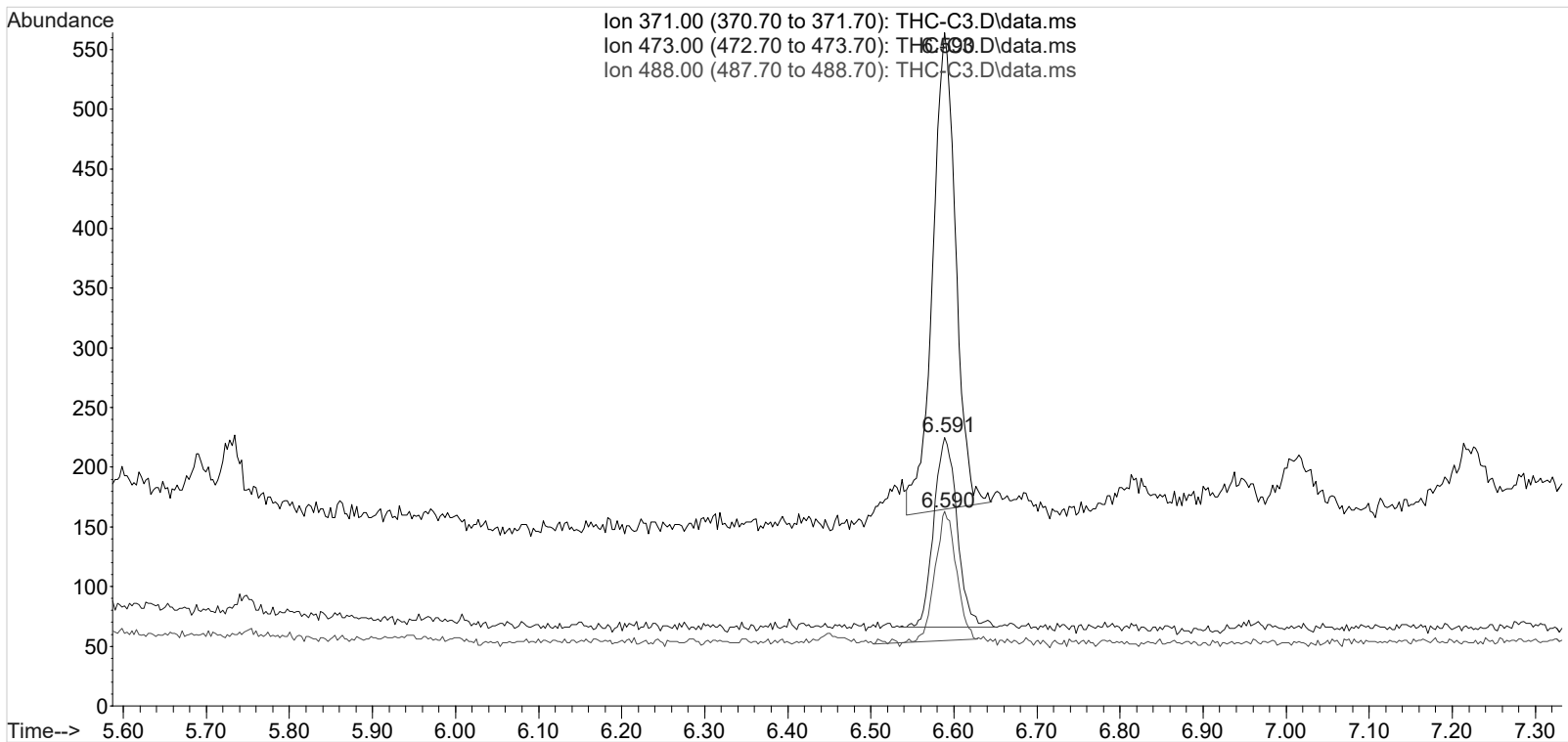
Sum of corrected areas: 3088

Signal : EIC Ion 488.00 (487.70 to 488.70): THC-C3.D\data.ms

peak #	R.T. min	first scan	max scan	last scan	PK TY	peak height	corr. area	corr. % max.	% of total
1	6.590	319	349	363	BB	108	1937	100.00%	100.000%

Sum of corrected areas: 1937

TOX.M Thu Jan 24 11:37:48 2019



CS

Run Date: 1/24/2019

Worklist #: ~~2897~~ 2896 CS

Laboratory Case #: BioRad C3 Lot: 68460

**Case Calculations:**

EIC Ion 371 Corr. Area: 7647

EIC Ion 473 Corr. Area: 3088

EIC Ion 488 Corr. Area: 1937

473:371 Ratio: 0.404

488:371 Ratio: 0.253

**Quality Control Calculations:**

1st Control

2nd Control

EIC Ion 371 Corr. Area: 28212

31762

EIC Ion 473 Corr. Area: 11757

13944

EIC Ion 488 Corr. Area: 7355

8743

Ratio of 473:371: 0.417

0.439

Average: 0.428

Ratio of 488:371: 0.261

0.275

Average: 0.268

Acceptable Retention Time Range: 6.493 to 6.693

Approximate Minimum Corrected Area of 371 Ion: 5642

Acceptable 473:371 Ratio Range: 0.342 to 0.513

Acceptable 488:371 Ratio Range: 0.214 to 0.322